

Plight of livestock guardian dogs



The Reality in Utah



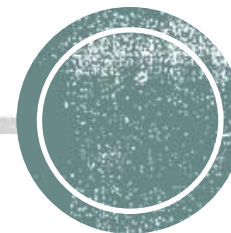
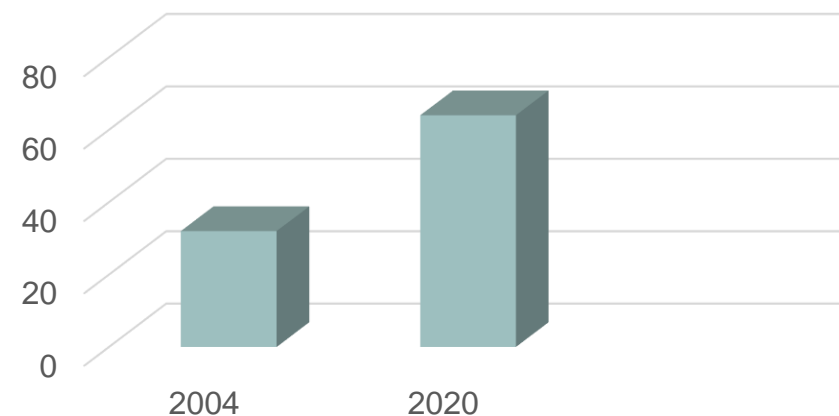
The use of livestock guardian dogs (LGD) originated in Europe and Asia thousands of years ago

Use of LGD in North America began in the 1970s

By 2004, 32% of sheep producers using LGD

Experts estimate the number of LGD used today in North America has doubled as a result of the decrease in inhumane predator management methods

Percent of Producers using LGD



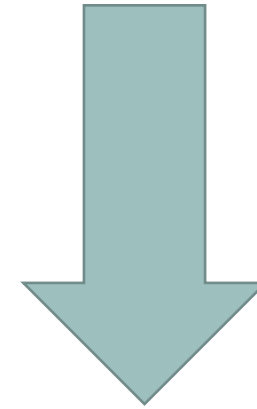
Using data from the University of California's Hopland Research and Extension Center, it is estimated that LGD:

Reduce lambs lost to coyotes by 43% each year

Reduce ewe losses by 25% each year

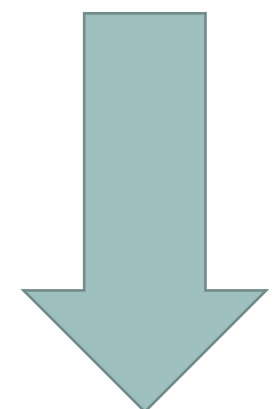
Many ranchers report that LGD eliminate predation entirely

Lamb
predation

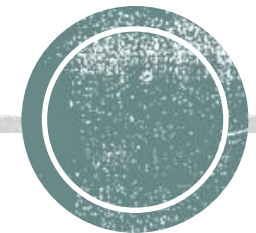


43%

Ewe
predation



25%



*model was based on using one dog per 100 ewes
<https://ucanr.edu/blogs/blogcore/postdetail.cfm?postnum=31297>

**300,000 sheep in Utah
5th in the Nation**

**Using an estimated
conservative number of
50% of ag operations
using LGD, this equates
to 150,000 sheep
protected by LGD.**



The general recommendation for number of dogs to sheep is one dog per 100 ewes or does.

This would bring the estimated amount of LGD protecting sheep in Utah to 1,500 dogs.



**The American Sheep Industry Association
Health Management Guidelines
(list below not inclusive)**

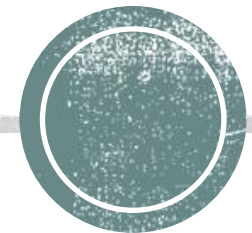
Providing adequate food and water

Shearing, clipping or grooming

Proper Identification

**Vaccination for distemper, hepatitis, parvo
and leptospirosis**

**Deworming for internal parasites and Ovine
Cysticercosis**



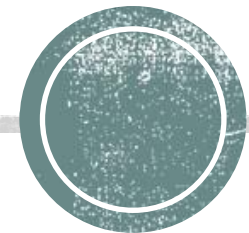
<http://d1cgrq366w3ike.cloudfront.net/http/DOCUMENT/SheepUSA/recommended-management-practices-dogs.pdf>

**The American Sheep Industry Association
Health Management Recommended Plan for
Sexually Intact LGD
(list below not inclusive)**

Spaying and neutering

**No breeding LGDs unless operations have
the time and ability to train the puppies, as
well as a market to place excess puppies.**

**Purchasing older, working pups from
reputable farms and ranches is highly
recommended.**



<http://d1cqrq366w3ike.cloudfront.net/http/DOCUMENT/SheepUSA/recommended-management-practices-dogs.pdf>

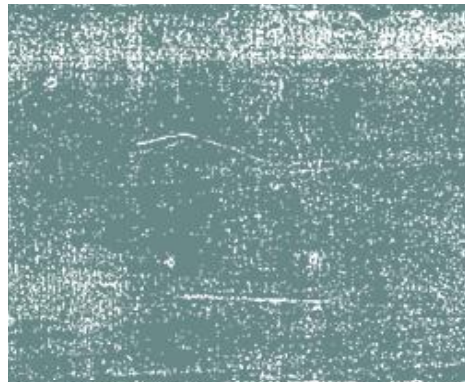
The Reality in Utah



Many producers do not implement these recommendations and continue to manage LGD by the **“accepted animal husbandry practices” guidelines which are** vague, unenforceable, subjective and archaic in our advanced and humane society.

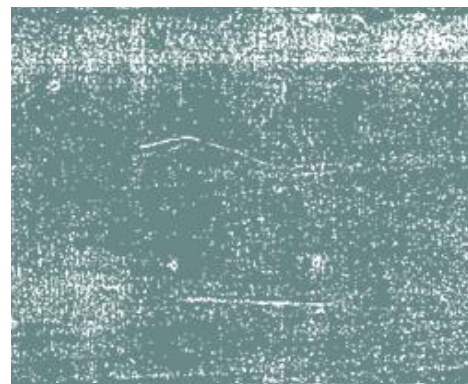
Hundreds of cases of severely emaciated and injured LGD have been documented by Utah shelters across the state and by good Samaritans.





**Dogs are found
starved,
dehydrated and
deceased.**





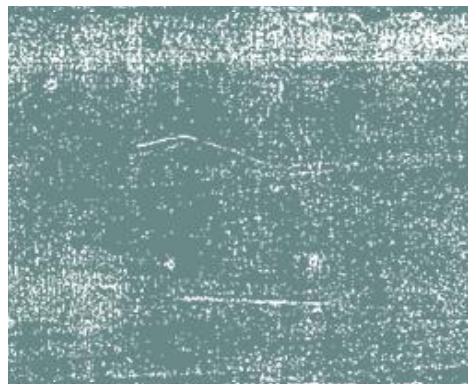
Some are found with severe injuries, some are old injuries that have never been cared for.





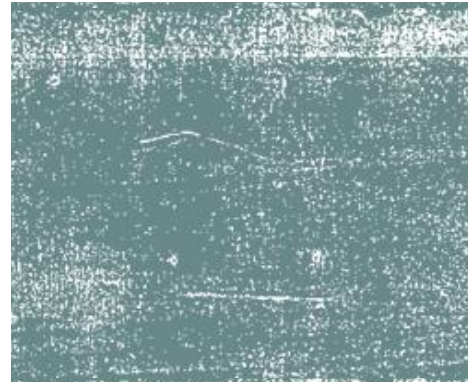
LGD mothers and their young are found left behind to fend for themselves in extreme weather conditions.





LGD are found so matted that the sex of the dog is unclear until they are shaved.



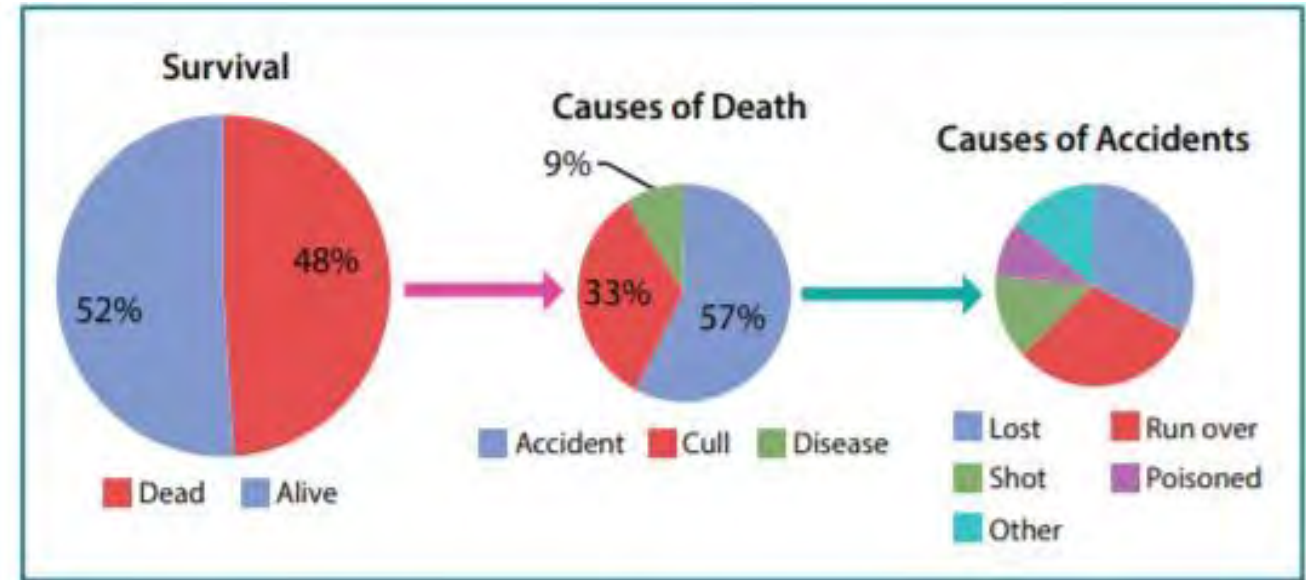


Most LGD that are found, dead or alive, do not carry any identification.



In a six-year study which concluded in 1983, 449 LGD were raised without human contact or medical care, 48% LGD never saw the age of six and one-third of those were killed by the very owner which they served.

Sadly, these same archaic practices are still used today.



The figure published by Texas A&M AgriLife Extension in September of 2015 shows the six-year survival rates of LGD and the causes of death. Study conducted by Coppinger 1978-1983



**“MANY DOGS I HAVE
SEEN ARE ABOUT 30
POUNDS UNDERWEIGHT”**

– ANONYMOUS,
UTAH DEPARTMENT OF
AGRICULTURE



AS A RESULT OF A
LIVESTOCK
CLASSIFICATION, THE
LGD ARE SUBJECT TO
“BAND” NEUTERING THAT
IS COMMONLY
PERFORMED ON CATTLE.
SHELTERS AND RESCUES
SEE MANY EXAMPLES
LIKE THIS ANNUALLY.



**“THE BAND NEUTER IS
AN INAPPROPRIATE
STERILIZATION METHOD
FOR DOGS”**

-ANONYMOUS, UTAH
DEPARTMENT OF
AGRICULTURE





LGD that are intact, unsocialized, unfed, unvaccinated and aren't identifiable by microchip, put the safety of the public and the welfare of the animal at risk on public lands.

Stories of neglect and abandonment are emerging on social media from across the state.





This puts a heavy burden on non-profit rescues, taxpayers, already underfunded animal shelters, local municipalities and the communities they serve.



There remains a social responsibility to assure and to improve the work conditions of LGDs, as with all working dogs.

A Tale of Two Brothers



Livestock Guardian Dog Companion Therapy Dog

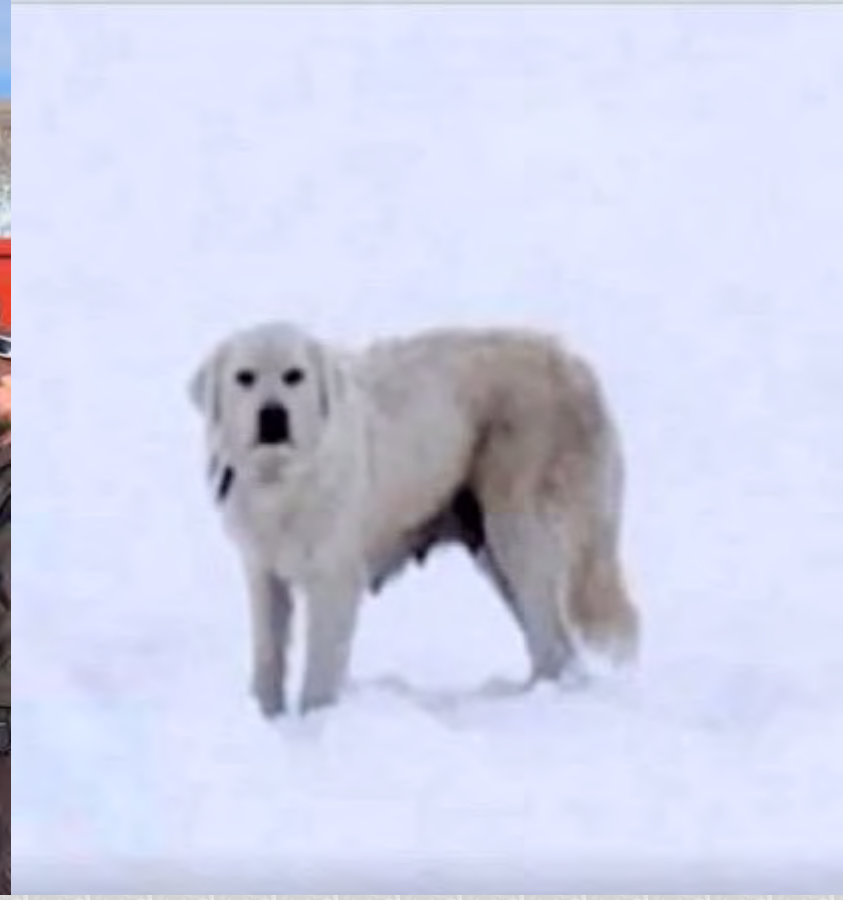
**One is protected by law,
the other is not.**

Can you tell which one?

Be their voice. www.coalitionforlgd.org



Coalition for LGD



Saving Grace



On Sunday, December 1st, 2019, a mother LGD and her surviving 3 pups were found by snowmobilers in the Monte Cristo area. The temperatures were sub zero and snow was over 10 feet deep.

Original story: <https://fox13now.com/2019/12/01/four-great-pyrenees-puppies-rescued-in-remote-area-of-weber-county/>

The puppies were saved but the mother dog ran away. Two determined women, supported by thousands of Utahns continued to search for her. They named the dog Grace. They set traps and Grace was spotted with two male companions. News media outlets across the country reported on the original story and many following stories in the continued search.

Follow up #1 <https://www.abc4.com/news/local-news/animal-advocates-believe-weber-county-puppy-rescue-may-be-part-of-rancher-abandonment-problem/>

Follow up #1 https://www.standard.net/news/local/elusive-great-pyrenees-mother-spotted-pups-adopted/article_fe9a7496-249b-58a9-9bbf-c0af2f850980.html

Follow up #1 <https://fox13now.com/2019/12/17/two-women-are-on-a-mission-to-rescue-a-great-pyrenees-dog-lost-in-utahs-monte-cristo-mountains/>

Follow up #1 <https://www.ksl.com/article/46697866/saving-grace-searchers-wont-give-up-hunt-for-mother-of-rescued-puppies>

Saving Grace





On March 23, 2020, one of Grace's presumed companions was found shot to death on public land. He had been shot in the hip and left to slowly and painfully die.

He was given the name "General".

These incidents are a risk to public safety and the state is liable.

<https://www.fox13now.com/news/local-news/search-team-finds-great-pyrenees-dog-shot-dead-in-cache-county>

Finding General





On April 4th **the second of Grace's presumed** companions was found dead. He appeared to have died from starvation.

He was given the name "Justice". Lack of protections must end now.

<https://www.abc4.com/news/top-stories/animal-advocates-find-two-other-fatally-shot-dogs-during-search-for-female-great-pyrenees/>

Finding Justice



A severely emaciated dog was found in a nearby canyon. Too weak to walk, she was carried down the mountain and rushed to an emergency clinic. Veterinarian reports state she is 50+ lbs. underweight and has fur loss due malnourishment. She also suffers from severe worm infestation and is 5% hydrated.



OUR GOALS: Mandated

- microchipping**
- vaccinations and dewormer**
- feeding stations/food, water and medical care**

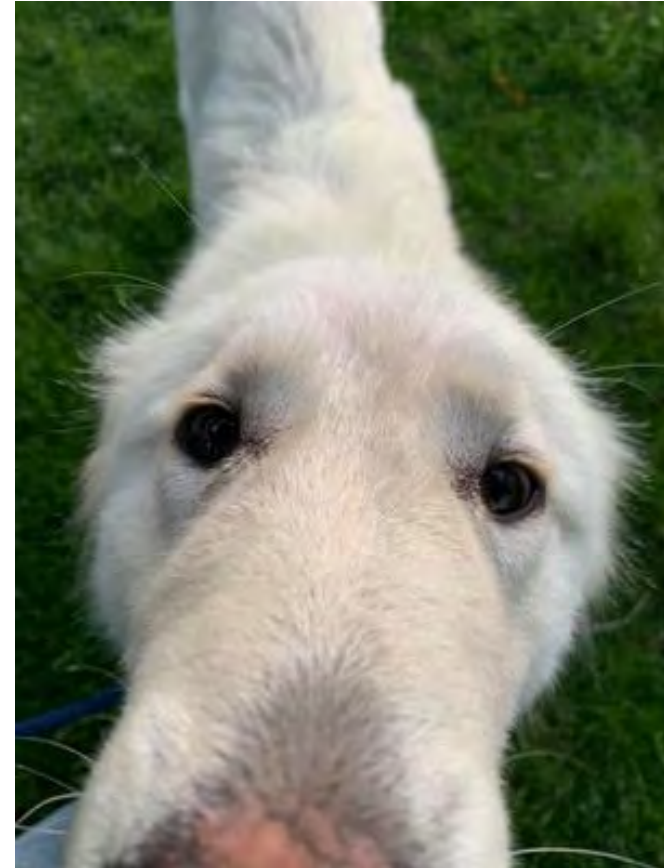
We also strive to inspire improved management methods such as not working unspayed females and/or spay and neuter, proper training methods that include human contact and response to handler commands, as well as grooming.



OUR GOALS: How do we achieve?

Reclassification

There is overwhelming public support to reclassify livestock guardian dogs from livestock to working/guardian dog and enact mandates.



OUR GOALS: Enforcement

Grazing Permit Requirements:

**Proof of microchipping,
vaccination/deworm/exam records**

**Evidence that dogs are being fed
(receipts and feeding schedule)**





Implementing recommended management practices will not only improve the wellbeing and working conditions of the dog and flock but will also protect the public and the producer.





